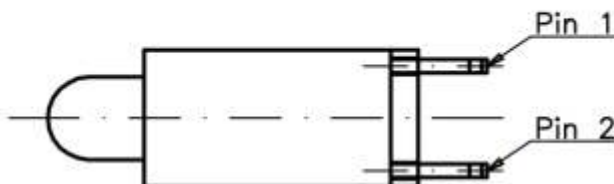
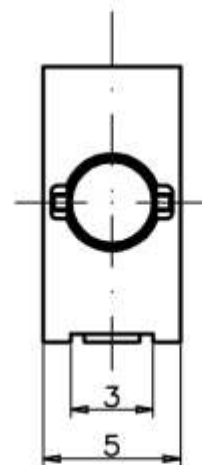
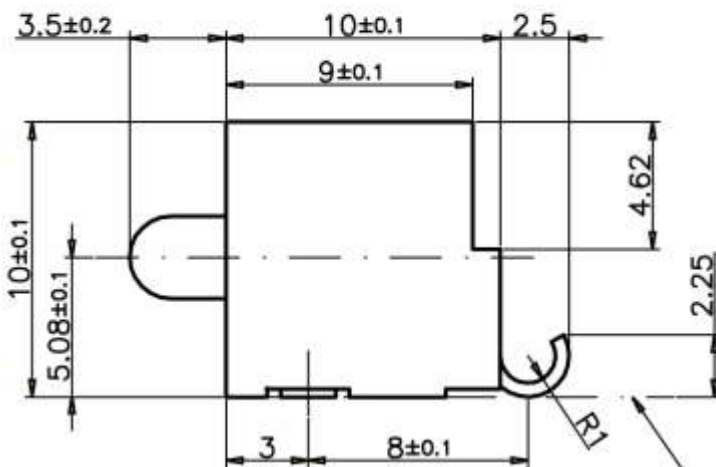
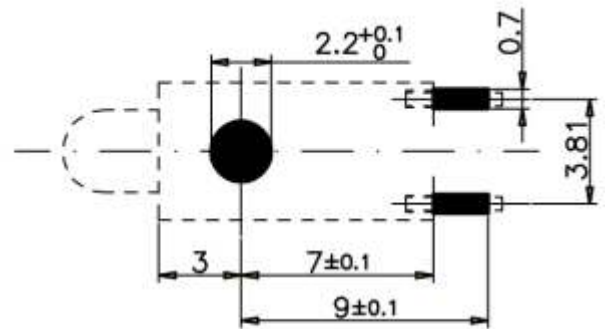
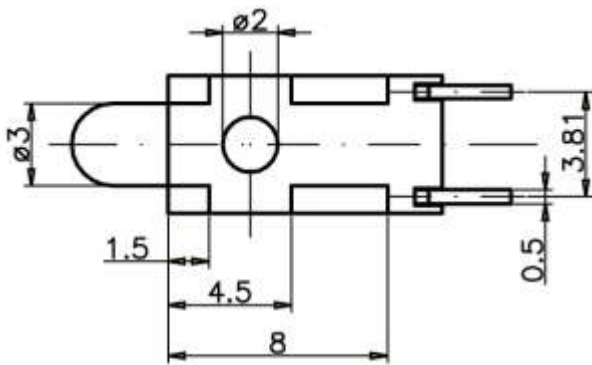




- $\varnothing$  3.0 mm LED
- Especially suitable for front-panel mounting

Surface mountable LED-Element includes a  $\varnothing$ 3mm LED. The location and design of the connectors guarantee optimal workability and testing characteristics and minimize soldering errors. The mounting of the LEDs in a recess, gives them a maximum of solder-heat protection. Additional mechanical fixation by two plastic fixation pegs available on request. For special designs IR-LED or DUO-LED are available. All LED-elements are available with normal or reversed polarity and are packed on reels. Other packing variations, such as tubes or trays, as well as special designs are available on request.



Koplanarität von Gehäuseauflage und Anschlußpins  $\leq 0,1$

**Mechanical Data****Material**

LED diameter	3.0 mm
Fixation mode	SMT
Pitch of soldering pads	3.81 mm
Serial pitch	5.0 mm
Coplanarity of the solder pins	≤ 0.1 mm
Operating temperature	<a href="#">see technical information - LED-Quality</a>
Soldering heat-proof	IR acc. CECC 00802, class C
Soldering	DIN IEC 68T2-20
Reflow soldering	JDEC J-STD-020 E
Packing	Tape on Reel
Packing unit	340 pcs. per reel

**Mechanical Data****Material**

Housing	PA GF30 black
---------	---------------